

Forest School

Riverley Primary School



"Cherish the natural world, because you're a part of it and you depend on it."
Sir David Attenborough

Our approach to Forest School?

Our aim and shared ambition at Riverley is to provide our children with rich outdoor learning experiences which allow them to develop holistically. We are fortunate in Leyton to have many green spaces to explore, for example: Jubilee Park, The Walthamstow Wetlands and Epping Forest and use these spaces to enhance our Forest School Provision. Together with our own base camp on our school grounds, we have many spaces where children can experience the natural world. Every single child at Riverley from Nursery to Year 6 engage in Forest School sessions every year. Our youngest children in Nursery and Reception have bi-weekly morning or afternoon sessions; whereas children from Year 1 to 6 will have two-half terms of Forest School Frolics - over the course of the year. These sessions harness the skills of enquiry, critical thinking and reflection and ensure that our children develop long-lasting connections with nature and the outdoors benefiting their health and well-being.



PRINCIPLES OF OUR FOREST SCHOOL



- 1) At Riverley, children engage in a long-term process of frequent and regular sessions in a woodland or natural environment.
- 2) Sessions support the development of a relationship between each child and the world around them.
- 3) Learning in our Forest School develops resilient, confident, independent and creative learners.
- 4) It offers learners the opportunity to take supported risks appropriate to the environment.
- 5) Our sessions are run by qualified Forest School practitioners.
- 6) We use a range of learner-centered processes to create a community conducive to development and learning.



Ms. Grant and Ms. Price are our Forest School Experts and both are in the final stages of completing their level three, Forest School Leader qualification.

Through their extensive training, they developed their own skill-set in order to be able to ensure the safe usage of tools as well as had the opportunity to practice a wide range of forest school crafts which they apply in their own sessions with our children.

In times of increasing screen time and technology dependency, it is incredibly important for our children to be provided with opportunities to experience, and positively interact, with natural environments.

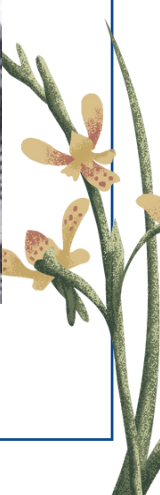
Ms Grant and Ms Price have worked hard to develop Riverley's own base camp and it now operates as a fully functioning outdoor classroom.



Ms. Grant



Ms. Price



RIVERLEY VALUES

Proud Traditions
Wide Horizons
High Achievement

"We get to find lots of bugs and get to hold them."

RECEPTION

"We discovered bird nests and baby trees when we went on a forest school adventure."

YEAR 1

"We learnt how to make a bird feeder so now I can tie different knots to make things."

YEAR 3

"Exploring base camp is great because I was able to find insects in their natural habitat."

YEAR 4



Our three pillars are embedded within Forest School:

PROUD TRADITIONS

We strive to provide our students with half termly excursions to local green spaces. Our children are able to apply their forest school skills beyond the school gates, and discover new and exciting things to expand their knowledge.

WIDE HORIZONS

During forest school sessions, we adopt a project based learning approach which allows students to develop independence and tenacity while working on long term projects and goals of their choosing. Sessions are linked to the curriculum but provide pupils with the opportunity to take a lead with their own learning.

HIGH EXPECTATIONS

We take pride in our environment and work together to take care of our base camp. Forest school enable our students to make a lasting connection with the natural world and appreciate the responsibility we, as humans, have to our planet.





Proud Traditions

Wide Horizons

High Achievement